



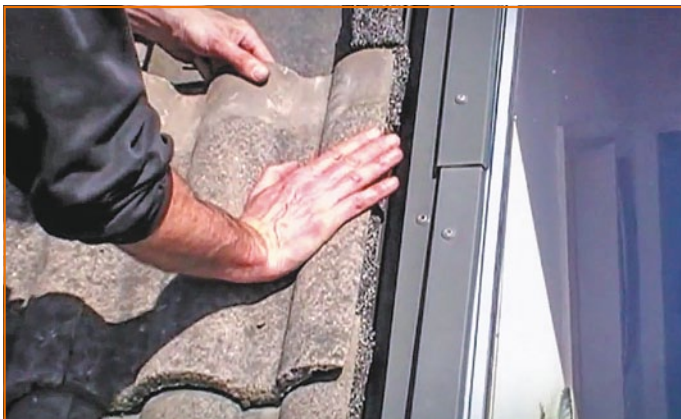
flexim®

Sealing roof window



1 Remove the porous foam band and ensure the substrate is clean and dry.

2 Press the Flexim onto the substrate using the gloves provided. The width of the bonding area must be at least 5 cm.



3 Place the tile onto the Flexim with clean hands and press firmly into place.



4 Remove any excess Flexim and smooth the material out with a spatula or finishing knife until you achieve a uniform appearance.

Safety Note

- Read the instructions before use!
- Not for consumption!
- Keep out of reach of children and animals!

Important

- Do not apply Flexim during persistent wet weather!
- Ensure the substrate is dry, clean and free of grease.
- The bonding area width must be at least 5 cm.
- We advise mechanical fixing for ridge, hip and façade tiles.

- With mechanical fixings ensure that space is left for expansion and contraction!
Do not attach the ridge tile tightly to the ridge board.
- Finish the surface smoothly. Remove excess material at an angle of 90° to the roof surface.
- A protective layer will form within 2-3 days in normal weather conditions (10-25°C).
- Ventilation can be achieved using ventilated tiles.
- If in doubt, consult the manufacturer.

Cleaning

Clean hands, tools and any excess Flexim on the tiles with a clean cloth. Use turpentine if necessary.

